



FAUNTEROY CENTER RESILIENCE HUB

WARD 7
WASHINGTON.D.C.



REGIONAL LEAD:
FAUNTEROY CENTER

“A Resilience Hub established on the principals of equity and inclusion, focused on building intergenerational resilience and creating sustainability. Services and programs are embedded in community and environmental stewardship by providing opportunities for enrichment, education and exposure to enable resiliency and sustained successes. The site will transform to become an innovative community engagement center equipped to provide resources in steady, disruptive and recovery states.”

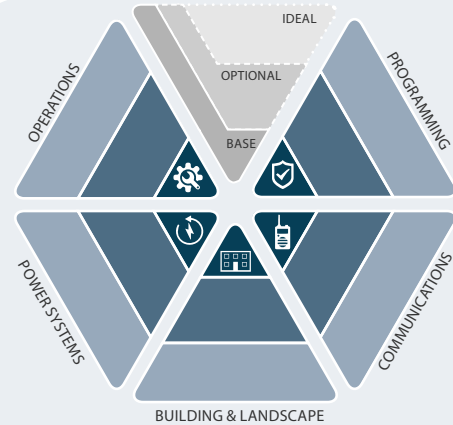
LAST UPDATED MAR. 2022

RATINGS

No two Resilience Hubs are alike. Each community will have different goals and priorities for all three resilience modes. The degree to which they meet their goals can be described as **Baseline**, **Optional**, and **Ideal**.

Baseline sites meet the minimum criteria for being a Resilience Hub and provide community benefit in all three resilience modes. **Optional** Resilience Hubs incorporate a range of expanded services and resilience-enhancing retrofits. **Ideal** Resilience Hubs meet ambitious goals that provide community benefits year-round.

MODE:



EVERYDAY

- Workforce development
- On-site health and wellness education and services
- Food literacy programming
- Financial literacy and vocational readiness
- Art shows and pop-up vendors (food stands)

- Wifi
- All-community events
- Broadcasting studio for podcasting and videocasting

- Industrial kitchen
- Computer center
- Green room with vertical farming

- Solar + Storage
- Solar installation training
- *Community solar*

- ADA+ compliant to ensure physical accessibility, and integration of closed caption services and brael
- Community-codevelopment systems and structure in place



RESILIENT PROGRAMMING

Offering additional services and programs that build relationships, promote community preparedness, and improve residents' health and well-being.



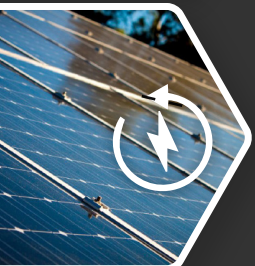
RESILIENT COMMUNICATIONS

Ensuring the ability to communicate within and outside the service area year-around and especially during disruptions and throughout recovery.



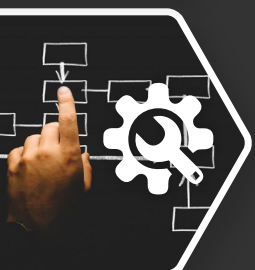
RESILIENT BUILDINGS AND LANDSCAPE

Strengthening the resilience of the facility to ensure that it meets operational goals in all conditions.



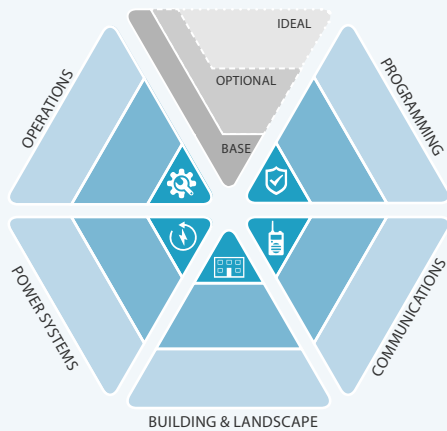
RESILIENT POWER

Ensuring reliable backup power to the facility during a hazard while also improving the cost-effectiveness and sustainability of operations in all three operating modes.



RESILIENT OPERATIONS

Ensuring personnel and processes are in place to operate the facility in all three modes.



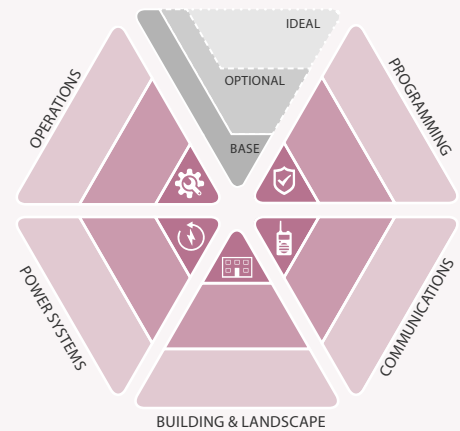
DISRUPTION

- Provision of critical services and emergency readiness kits
- Training for community emergency readiness

- Emergency communication system
- Emergency radio
- Thursday resilience series with rotating themes (climate and environmental stewardship, flooding and mitigation, disaster and recovery, workforce development)

- Structural floodproofing
- Residential floodproofing support

- Power redundancy via battery backup system



RECOVERY

- Training for community emergency recovery
- Mental health programming

NEEDS & OPPORTUNITIES

	OPPORTUNITIES FOR FUNDING	OPPORTUNITIES FOR IMPLEMENTATION	OPPORTUNITIES FOR CAPACITY BUILDING
PROGRAMMING 	<ul style="list-style-type: none">• Funding for an expansion of available services and programming		<ul style="list-style-type: none">• Partnerships in programming and services to share space
COMMUNICATION 	<ul style="list-style-type: none">• Funding for infrastructure (emergency radio and communication systems)• Funding for broadcasting studio		
BUILDINGS & LANDSCAPE 		<ul style="list-style-type: none">• Commercial space buildout with commercial kitchen, greenroom, and multifunctional space	<ul style="list-style-type: none">• Space partners to offer programs and services and share in overhead costs
POWER 			
OPERATIONS 	<ul style="list-style-type: none">• Funding for ongoing hub operations and maintenance (site overhead)		

CURRENT PARTNERS

- USDN
- Washington D.C. Department of Parks and Recreation
- Academy of Infrastructure and Construction
- Georgetown University

FUNDING

- Prince Charitable Funds
- D.C. Hope Grant
- HUD

