



BOYLE HEIGHTS ARTS CONSERVATORY

CITY OF LOS ANGELES
CALIFORNIA



REGIONAL LEAD:
CLIMATE RESOLVE

Boyle Heights Arts Conservatory (BHAC) advocates for the development of a new framework toward diversity in the creative arts, media, and technology fields—one that is socially and economically inclusive, and accurately reflects the City of Los Angeles in terms of ethnicity, gender, and age.

BOYLE HEIGHTS
ARTS CONSERVATORY

LAST UPDATED NOV. 2021

RATINGS

No two Resilience Hubs are alike. Each community will have different goals and priorities for all three resilience modes. The degree to which they meet their goals can be described as Baseline, Optional, and Ideal.

Baseline sites meet the minimum criteria for being a Resilience Hub and provide community benefit in all three resilience modes. Optional Resilience Hubs incorporate a range of expanded services and resilience-enhancing retrofits. Ideal Resilience Hubs meet ambitious goals that provide community benefits year-round.

MODE:



RESILIENT PROGRAMMING

Offering additional services and programs that build relationships, promote community preparedness, and improve residents' health and well-being.



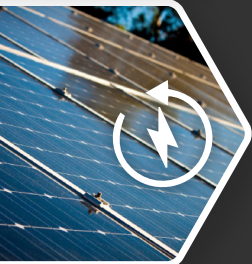
RESILIENT COMMUNICATIONS

Ensuring the ability to communicate within and outside the service area year-around and especially during disruptions and throughout recovery.



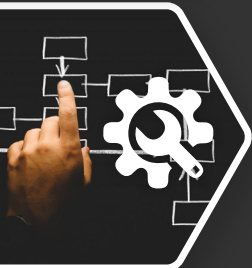
RESILIENT BUILDINGS AND LANDSCAPE

Strengthening the resilience of the facility to ensure that it meets operational goals in all conditions.



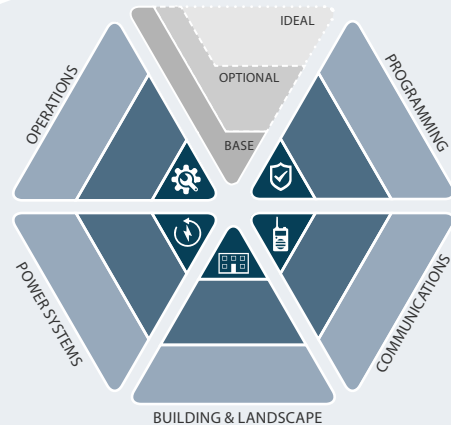
RESILIENT POWER

Ensuring reliable backup power to the facility during a hazard while also improving the cost-effectiveness and sustainability of operations in all three operating modes.



RESILIENT OPERATIONS

Ensuring personnel and processes are in place to operate the facility in all three modes.



EVERYDAY

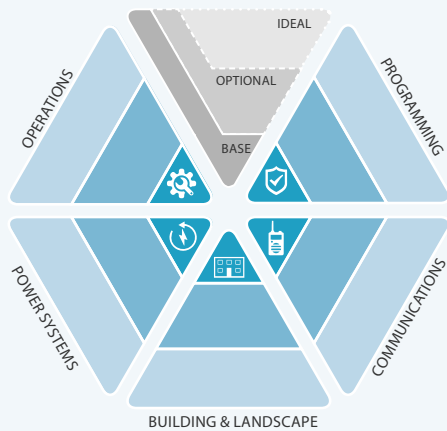
- Youth programming in arts
- Community resilience outreach and organizing
- Job training in radio & broadcasting
- Formerly incarcerated programming & support
- Training and aid for micro-businesses

- Ongoing community engagement & communications
- Radio station with mixtec, spanish, and english programming
- Hub text number in English and Spanish
- Intergenerational weekend programming
- Cleanup, tree giveaway, and gardening activity

- Existing building in good condition
- Electrical retrofits
- Water capture & storage system
- Commercial kitchen, food storage, and bar sink
- Smog eating mural on outside of building
- Needs development of green space

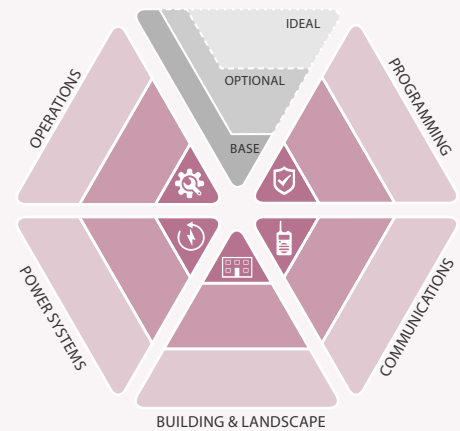
- Renewable power system: solar + storage
- Mobile single phase battery unit available for outdoor events and emergencies

- Solid leadership team
- Hub open-house and tours
- ADA accessible through elevator and ramps
- Needs funding for staff in all modes
- Asset map coordinating services across service providers and facility operators in Boyle Heights
- Drills, operations training, and manual for staff,



DISRUPTION






- Community resilience-building curriculum
- Satalite training center for the American Red Cross (CRP)
- Conservatory youth-led community organizing to foster block-level social cohesion
- Community based partnerships to support engagement during COVID-19 pandemic
- Needs CERT training
- Needs Neighborhood Walkie Talkies
- Need another Resilience Hub site to support scale of the surrounding community
- Solar battery backup system
- Training manual: protocol for disruption, living guide for best practice



RECOVERY

- Training for proactive community recovery preparedness
- Full time social workers on site
- Network between service providers throug community asset mapping will facilitate better coordination of services in recovery
- Ongoing conversaions and surveys about resilience needs

NEEDS & OPPORTUNITIES

	OPPORTUNITIES FOR FUNDING	OPPORTUNITIES FOR IMPLEMENTATION	OPPORTUNITIES FOR CAPACITY BUILDING
PROGRAMMING 	<ul style="list-style-type: none"> • Funding for social work expansion • Funding for participatory science • Funding for general programmatic expansion 		<ul style="list-style-type: none"> • Partnerships for service and programmatic expansion
COMMUNICATION 	<ul style="list-style-type: none"> • Funding for proactive outreach 	<ul style="list-style-type: none"> • Ongoing community co-design and co-development 	<ul style="list-style-type: none"> • CERT training lead
BUILDINGS & LANDSCAPE 	<ul style="list-style-type: none"> • Eastside Leads • LACI • LADWP • Funding for additional Resilience Hubs to better support the surrounding community • Funding for Smog Eating mural 	<ul style="list-style-type: none"> • Critical infrastructure implementation, namely solar+storage and atmospheric waster machine 	<ul style="list-style-type: none"> • Landscape services lead
POWER 			
OPERATIONS 	<ul style="list-style-type: none"> • Funding for ongoing operations and maintenance 		<ul style="list-style-type: none"> • Citizen leadership and volunteers • Staff coordinator

CURRENT PARTNERS

- USDN
- Climate Resolve
- City of Los Angeles
- USGBC
- American Red Cross
- LACI
- LADWP
- NorCal Resilience Network
- APEN
- California Environmental Justice Alliance
- Promesa Boyle Heights
- Eastside Leads
- Inclusive Action
- Community Power Collective

FUNDING

- Boyle Heights Arts Conservatory Funding
- USGBC Grant
- Hilton Foundation
- JP Morgan



BOYLE HEIGHTS
ARTS CONSERVATORY



USDN | urban sustainability
directors network