



SAN LEANDRO'S RESILIENCE HUB NETWORK

SAN LEANDRO, CA

With support from USDN, the City of San Leandro is supporting the development of a network of Resilience Hubs throughout San Leandro neighborhoods. The network of sites were chosen by community leaders and include places of worship, community centers, and trusted neighborhood spaces and are prioritized in communities that have been most marginalized. Through a series of workshops, funding, and consultant support, the Resilience Hub Network focuses on community care and belonging, increasing social cohesion and connectivity, disaster preparedness, and climate mitigation and adaptation to be “ready for anything”.



BACKGROUND

The unique approach to this project is that the City of San Leandro acts as a project manager and umbrella for the network of Resilience Hubs. The City is a conduit and provider of resources, through bimonthly online workshops, skill-sharing and peer-to-peer learning, covering topics such as increasing social connectivity and care, emergency preparedness, conflict resolution, and fundraising. In-person workshops are conducted in collaboration with organizational partners and address important topics such as neighborhood asset mapping, increasing sense of belonging, and energy resilience.

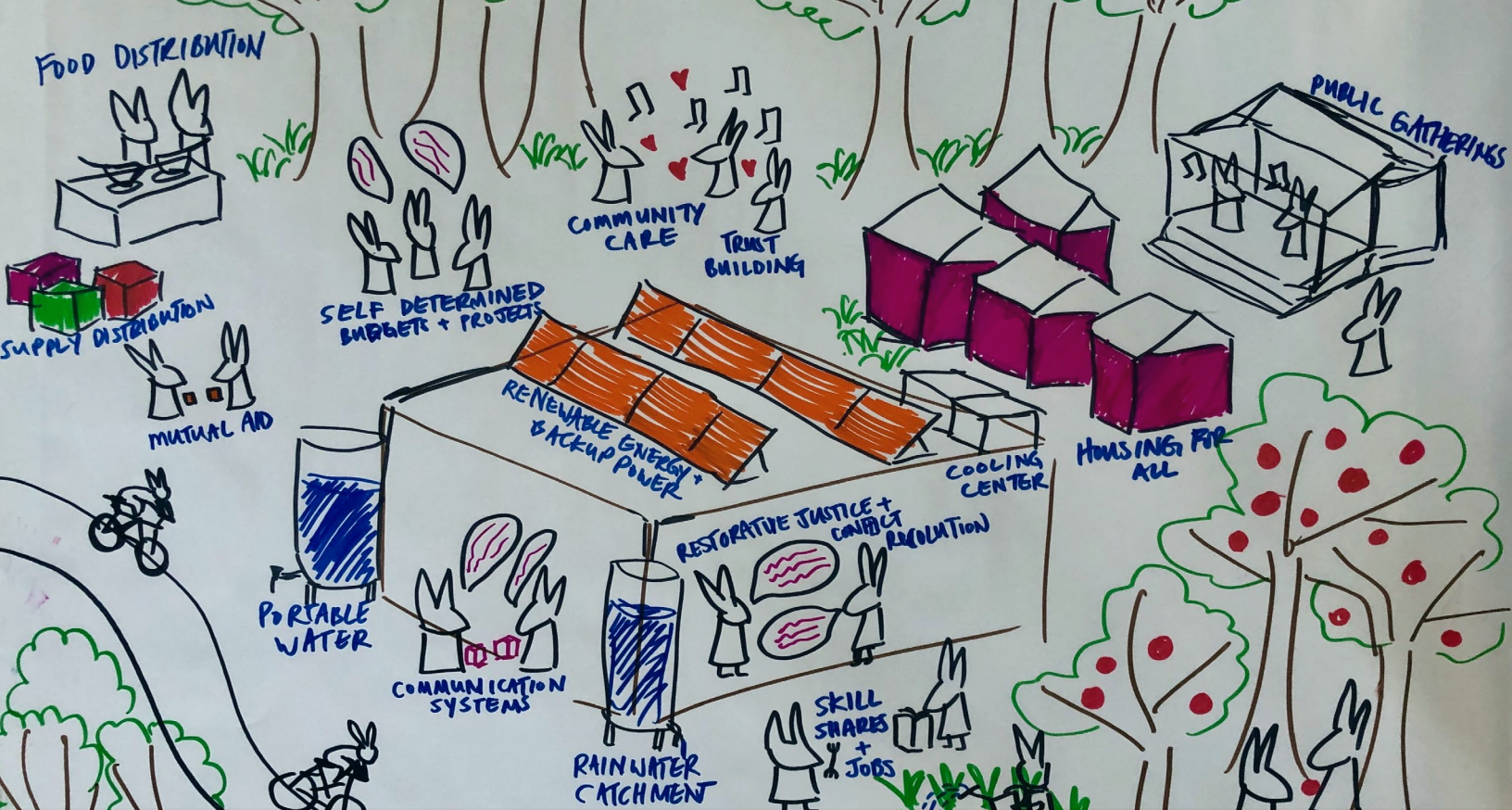
The bimonthly governance meetings make up a Collaborative Stakeholder Structure that allows for cross-site exchange and pollination, collective decision-making and partnership building with the City and regional groups such as StopWaste and Sogorea Te' Land Trust. Furthermore, the network supports the identification of projects and funding opportunities from state and regional grants. As sites deepen their understanding of climate resilience and community needs, the City provides technical assistance in finding contractors, grant writing, and project management, ensuring a holistic approach to building a Resilience Hub network and community resilience in San Leandro.

The groundwork for the Resilience Hub network was established through in-depth outreach during the development of the City's 2021 Climate Action Plan and ongoing relationship building since then. USDN provided initial funding in 2020-21 to support a regional leadership training program on resilience hubs to the Cities of San Leandro, Berkeley, Oakland, Fremont, San Rafael, and Alameda County, with a community partner lead. Temple Beth Sholom and Church of Christ were the inaugural San Leandro hub sites. After the regional program ended, the City developed a San Leandro specific cohort in 2022 and recruited additional hub partners.

The City has been successful in distributing grant funding to kickstart small climate

projects and community building. At the end of 2023, \$73,965 from federal funding was distributed to seven hub sites for energy and water efficiency appliance upgrades, emergency preparedness supplies, and ADA compliance. Another \$4,803 from the City's general fund was distributed as small grants to support youth programming and energy backup. The City's Resilience Hub work was recognized by the Strategic Growth Council during the Catalyst Regional Summer Roundtable Series in 2023.





STRENGTHS OF THIS APPROACH

- A robust partner network for distribution of information and resources to community members
- More connected and accurate communication during disruptions between sites and the City
- Increase in locally trusted locations that can provide heating, cooling, access to power and information, and access to resources such as food and water
- Less duplication of work across the community
- Community leadership capacity building and training
- Cross-departmental integration with Human Services and Emergency Management

LESSONS LEARNED

- Relationship building takes years and the capacity of site partners may change over time.
- The capacity of site partners is a significant barrier, both in the skills and technical knowledge around resilience topics, as well as time to self organize and implement projects on top of their regular work. Increasing capacity and site staffing is a key priority.
- Due to the nature of the sites and organizations in San Leandro, a network model with smaller hubs and specialized audiences fit better than one or two larger hubs that did everything.
- In a network model, not every hub site is going to meet all of the components. The key is to enhance what components make the most sense for each site.
- Adopting community-led decision-making and enlisting the expertise of a community-embedded facilitator is vital for inclusive Resilience Hub development.

SAN LEANDRO'S RESILIENCE HUBS INCLUDE:

Temple Beth Sholom is a historic synagogue with a forward-thinking leadership, who provide preschool and childcare services, mutual aid, and more.

The San Leandro Church of Christ & Lewis Ave Neighbors are growing a community garden and have hosted several neighborhood block parties and socials.

Bethel Community Church's food distribution, community garden, tiny home project, and other community programming make it an amazing example of resiliency in action.

Teen Advocacy Going Strong is a nonprofit, second-hand clothing store and workspace dedicated to serving teens and young adults ages 13-24.

Korean Community Center of the East Bay empowers immigrants in the Bay Area through access to education, services, resources and advocacy.

Davis Street Community Center guides families and individuals out of poverty and into productive lives, providing services from medical care and child care to food and clothing.

First United Methodist Church has a long history of serving the community of San Leandro, and they currently host a warming shelter for the unhoused during the winter months.

Mulford Gardens Improvement Association seeks to improve the social, cultural, and environmental conditions of the historic Mulford Gardens neighborhood through community spaces, events, and other outreach efforts.

The City is collaborating with local residents from the Washington Manor neighborhood to make the Manor Branch Library a community hub that serves all. Homegrown Habitats, a volunteer group, started a demonstration native garden in the library patio.

Signing Roots builds accessible connections, fostering belonging, and equipping signing communities with inclusive disaster preparedness skills and other sustainability initiatives.

The Vietnamese American Community Center of the East Bay provides support for Southeast Asian immigrants and refugees.

CA BrainWaves increases support for neurodiversity in the way of housing, employment, education, research, medical care, specialized training, legal aid, and community systems.



RESILIENCE MODES

No two Resilience Hubs are alike. Each community will have different goals and priorities for all three resilience modes. The degree to which they meet their goals can be described as Baseline, Optional, and Ideal.

Baseline sites meet the minimum criteria for being a Resilience Hub and provide community benefit in all three resilience modes. Optional mode incorporates a range of expanded services and resilience-enhancing retrofits as determined by community members. Ideal Hubs meet ambitious goals that provide community benefits year-round and are fully retrofitted to support all community members.

MODE:



RESILIENT PROGRAMMING

Offering additional services and programs that build relationships, promote community preparedness, and improve residents' health and well-being.



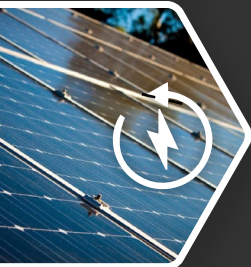
RESILIENT COMMUNICATIONS

Ensuring the ability to communicate within and outside the service area year-around and especially during disruptions and throughout recovery.



RESILIENT BUILDINGS AND LANDSCAPE

Strengthening the resilience of the facility to ensure that it meets operational goals in all conditions.



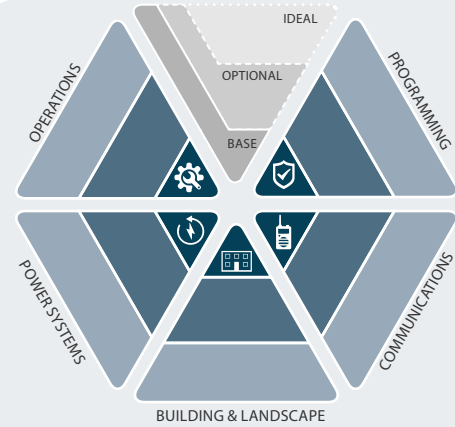
RESILIENT POWER

Ensuring reliable backup power to the facility during a hazard while also improving the cost-effectiveness and sustainability of operations in all three operating modes.



RESILIENT OPERATIONS

Ensuring personnel and processes are in place to operate the facility in all three modes.



EVERYDAY

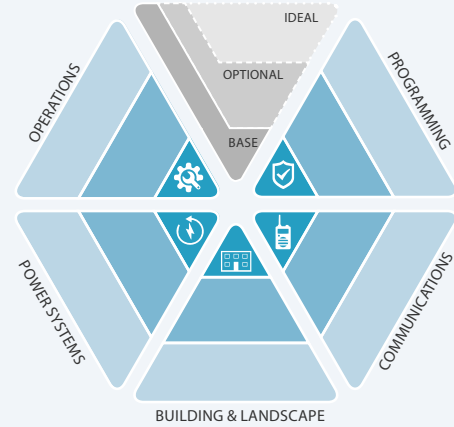
- Food pantry
- Social services, immigration legal aid
- Health clinic
- Mental health services and support groups
- Community healing/wellness events
- Recreation activities (group hikes, social hours for seniors)
- Childcare

- Multilingual support in Korean, Cantonese, Mandarin, Khmer, Japanese, Hebrew, Tagalog, Spanish

- Community gardens, existing kitchen facilities

- Solar Power

- ADA+ compliant to ensure physical accessibility



DISRUPTION

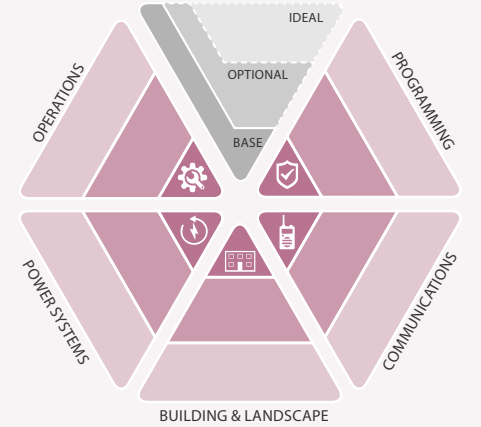
- Robust network of partners for support services

- Community gathering (safety, support, and sustenance), neighborhood phone tree, integration into city communications and infrastructure and Emergency Operations Plan

- Warming center during cold weather events, cooling center during heat waves

- Back-up generator

- Available 24/7 staffing
- On-site security
- Full-time Resilience Incubator Manager and Support Staff



RECOVERY

- Mental Health Programming (trauma/stress management)






- Provide consistent messaging in recovery
- Support with insurance companies and claims
- Connect seniors with younger and able-bodied support for connection & care
- Active outreach to elderly

- Structural floodproofing
- Residential floodproofing support
- Structural cooling solutions
- Flexible use of certain spaces for decontamination

- Power redundancy via battery backup system
- Drinking water capture, filtration and access
- Cooling Hub during heat waves
- Warming center during cold weather events

- Available 24/7 staffing
- On-site security
- Full-time Resilience Incubator Manager and Support Staff

NEEDS & OPPORTUNITIES

	OPPORTUNITIES FOR FUNDING	OPPORTUNITIES FOR IMPLEMENTATION	OPPORTUNITIES FOR CAPACITY BUILDING
PROGRAMMING 	<ul style="list-style-type: none"> Expansion of available intergenerational services and programming 	<ul style="list-style-type: none"> Design collaborative programs 	<ul style="list-style-type: none"> Partnerships in programming and services to share space
COMMUNICATION 	<ul style="list-style-type: none"> Communications infrastructure (emergency radio and communication systems) Broadcasting Studio and Technology Center 	<ul style="list-style-type: none"> Communication/ Media expertise 	<ul style="list-style-type: none"> Training around communication systems and equipment
BUILDINGS & LANDSCAPE 	<ul style="list-style-type: none"> Roof repair, electrical upgrades, kitchen remodel, bathroom remodel, building electrification 	<ul style="list-style-type: none"> Rainwater re-capture In-kind construction and equipment Sustainable (green) buildout solutions 	<ul style="list-style-type: none"> Outreach around utilizing the warming and cooling centers
POWER 	<ul style="list-style-type: none"> Feasibility assessment and funding for solar + storage, backup generator 		
OPERATIONS 	<ul style="list-style-type: none"> Funding for ongoing Hub operations and maintenance (site overhead) Overall SMART design focused on flexibility and innovation green solutions 	<ul style="list-style-type: none"> In-kind operational support (security, facility management, on-site tech support, telecommunications) 	<ul style="list-style-type: none"> Partnerships to support site operational capacity; grant funding to increase site staffing

CURRENT PARTNERS/COLLABORATORS

- StopWaste
- Sogorea Te' Land Trust
- USDN

FUNDING

- American Rescue Plan Act
- California Energy Commission
- City of San Leandro

